

Summer New Items 2018

**TRIX**



# Four-Axle General-Purpose Locomotive



## 16404 Class 140 Electric Locomotive

**Prototype:** German Federal Railroad (DB) class 140 standard design electric locomotive. Chrome oxide green basic paint scheme. Version with double lamps, plastic rain gutters above the end windows and cab doors, "Schweiger" design ventilation grills (original version), undivided engine room windows with rubber gaskets, and end grab irons. The locomotive looks as it did around 1989.

**Use:** Freight and passenger trains in both commuter and long-distance service.

**Model:** The locomotive is new tooling. The body and frame are constructed of die-cast zinc. The locomotive has a built-in digital decoder and sound generator for operation with DCC and Selectrix. The motor has a flywheel. 4 axles powered. Traction tires. The headlights and marker lights change over with the direction of travel. Warm white LEDs are used for the lighting. The locomotive has cab lighting. All of the lighting can be controlled digitally. The locomotive has a close coupler mechanism. It also has separately applied grab irons. Length over the buffers 103 mm / 4-1/16".

- New tooling.
- Body constructed of die-cast zinc.
- Digital sound with many functions.

One-time series.



© T. Estler

Digital Functions	DCC	SX2	SX
Headlight(s)	•	•	•
Locomotive whistle	•	•	•
Electric locomotive op. sounds	•	•	
Engineer's cab lighting	•	•	
Direct control	•	•	
Sound of squealing brakes off	•	•	
Rear Headlights off	•	•	
Whistle for switching maneuver	•	•	
Front Headlights off	•	•	
Station Announcements	•	•	
Conductor's Whistle	•	•	
Brake Compressor	•	•	
Blower motors	•	•	
Letting off Air	•	•	
Light Function	•	•	
Special Function	•	•	
Sanding	•	•	
Special sound function	•	•	
Station Announcements	•	•	
Station Announcements	•	•	
Station Announcements	•	•	
Train announcement	•	•	
Station Announcements	•	•	
Station Announcements	•	•	
Blower motors	•	•	
Special sound function	•	•	
Special sound function	•	•	
Special sound function	•	•	
Sound of Couplers Engaging	•	•	



# EXCLUSIV

2/2018

This model is being produced in a one-time series only for the Märklin Dealer Initiative (MHI). 5 years warranty on all MHI/Exclusiv items and club items (Märklin Insider and Trix Club) starting in 2012. The warranty terms and a current explanation of the symbols can be found on the Internet at [www.trix.de](http://www.trix.de)



**15869 "Modern German Federal Railroad"  
Freight Car Set**

**Prototype:** 1 type Tamms 893 freight car with a rolling roof, 1 type Eanos-x 052 gondola loaded with wood, and 1 type Rils 652 sliding tarp car, all painted and lettered for the German Federal Railroad (DB). The cars look as they did around 1989.

**Model:** All of the cars have a close coupler mechanism. The car frames and bodies have separately applied details specific to the types. The gondola has a load of "wood". All of the cars are separately packaged. Total length over the buffers 320 mm / 12-5/8".

One-time series.



Prototypical down to the folds in the tarp



15869

16404

# Pure Power with Six Axles



## 22177 Class E 50 Electric Locomotive



© Thomas Estler

**Prototype:** German Federal Railroad (DB) class E 50 heavy freight locomotive. Chrome oxide green basic paint scheme. The largest class of the standard design electric locomotives from the new construction program of the Fifties. Includes double lamps, multiple forced air vents,

and a continuous rain gutter. Locomotive road number E 50 065. The locomotive looks as it did around 1962.

**Model:** The locomotive has a digital decoder and extensive sound functions. It also has controlled high-efficiency propulsion with a flywheel, centrally mounted. 4 axles powered by means of cardan shafts. Traction tires. The triple headlights and dual red marker lights change over with the direction of travel, will work in conventional operation, and can be controlled digitally. The headlights at Locomotive End 2 and 1 can be turned off separately in digital operation. When the headlights are turned off at both ends, the double "A" light function is on. Maintenance-free warm white and red LEDs are used for the lighting. The locomotive has separately applied metal grab irons on the sides and ends. The engineer's cabs and the engine room have interior details in relief. Brake hoses and coupler hoses are included as detail parts that can be mounted on the locomotive.

Length over the buffers 22.4 cm / 8-13/16".

- **Digital decoder and extensive operation and sound functions included.**
- **Warm white and red LEDs used for lighting.**
- **Locomotive includes a metal body.**

**This model can be found in an AC version in the Märklin H0 assortment under item number 37855.**

Digital Functions	DCC	mfx
Headlight(s)	•	•
Electric locomotive op. sounds	•	•
Locomotive whistle	•	•
Direct control	•	•
Sound of squealing brakes off	•	•
Headlight(s): Cab2 End	•	•
Whistle for switching maneuver	•	•
Headlight(s): Cab1 End	•	•
Compressor	•	•
Letting off Air	•	•
Blower motors	•	•
Sound of Couplers Engaging	•	•
Operating Sounds 1	•	•
Sanding	•	•
Conductor's Whistle	•	•
Doors Closing	•	•
Rail Joints	•	•
Switching maneuver	•	•
Pantograph Sounds	•	•
Station Announcements	•	•



# In Light Switching Service



## 22308 Class 323 Diesel Locomotive

**Prototype:** German Federal Railroad (DB) class 323 (Köf II) diesel locomotive. Reddish brown paint scheme and an enclosed cab. Locomotive road number 323 781-5. The locomotive looks as it did in the mid-Seventies.

**Model:** The locomotive has a digital decoder and extensive sound functions. 2 axles powered. Triple headlights and dual red marker lights change over with the direction of travel, will work in conventional operation, and can be controlled digitally. The headlights at Locomotive End 1 and 2 can be turned off separately in digital operation. When the switching range is activated or when the headlights at both ends are turned off, then the "Double ‚A‘ Light" function is on at both ends. The locomotive has separately applied metal grab irons. Length over the buffers approximately 7.4 cm / 2-7/8".

Digital Functions	DCC	mfx
Headlight(s)	•	•
Diesel locomotive op. sounds	•	•
Horn	•	•
Direct control	•	•
Sound of squealing brakes off	•	•
Headlight(s): Cab2 End	•	•
Whistle for switching maneuver	•	•
Headlight(s): Cab1 End	•	•
Compressor	•	•
Letting off Air	•	•
Switching maneuver	•	•
Replenishing fuel	•	•
Train radio	•	•

- Digital decoder and extensive sound functions included.



© Thomas Estler



Separately applied metal grab irons



**Extensive sound functions included**

# Measurement Technology in a Golden Yellow Paint Scheme



## 22657 Class 724 Powered Rail Car

**Prototype:** German Federal Railroad (DB) class 724 (former VT 95.9) railroad maintenance car as an inductive test car. Golden yellow basic paint scheme. Based at the signal maintenance facility in Wuppertal. Powered rail car road number 724 002-1. The unit looks as it did around 1980.

**Model:** The car has an mfx digital decoder and extensive sound functions. It also has controlled high-efficiency propulsion with a flywheel. 2 axles powered. Traction tires. The car has factory-installed interior lighting. The triple headlights and dual red marker lights change over with the direction of travel, will work in conventional operation, and can be controlled digitally. The headlights at both

ends can be turned off separately in digital operation. The car has the double "A" light function. Maintenance-free warm white and red LEDs are used for the lighting. The car has interior details with several figures. There is an additional powered rail car driver in the cab. Length over the buffers 16 cm / 6-5/16".

- Tooling variation based on the VT 95.9 rail bus.
- mfx digital decoder and a variety of operation and sound functions included.
- Figures installed at the factory, including a powered rail car driver.

This model can be found in an AC version in the Märklin H0 assortment under item number 39957.

Digital Functions	DCC	mfx
Headlight(s)	•	•
Interior lights	•	•
Diesel locomotive op. sounds	•	•
Horn	•	•
Direct control	•	•
Sound of squealing brakes off	•	•
Rear Headlights off	•	•
Conductor's Whistle	•	•
Front Headlights off	•	•
Doors Closing	•	•
Rail Joints	•	•
Letting off Air	•	•
Train radio	•	•
Dialog	•	•
Dialog	•	•
Toilet being flushed	•	•
Replenishing fuel	•	•
Sanding	•	•



Pure operating enjoyment:  
The set of figures is like having the original testing team





# USA – Giant of the Fifties



## 22940 Class 3900 Steam Locomotive

**Prototype:** Union Pacific Railroad (UP) class 3900 "Challenger" heavy American freight steam locomotive, with a coal tender. Locomotive road number 3969. The locomotive looks as it did in the Fifties.

**Model:** The locomotive has a digital decoder and extensive sound functions. Different operation sounds such as coal and water being replenished or the sounds of opening and closing the sliding windows and the ventilation hatch on the cab can be controlled digitally. The locomotive also has controlled high-efficiency propulsion with a flywheel, mounted in the boiler. 6 axles powered. Traction tires. The locomotive has an articulated frame enabling it to negotiate sharp curves. It also has Boxpok driving wheels. The headlight, backup light on the tender, and the number board and marker lights are maintenance-free, warm white LEDs. 2 smoke generators (7226) can be installed in the locomotive; the contacts for them are on constantly. The headlight, backup light on the tender, and the contact for the smoke unit will work in conventional operation and can be controlled digitally. The cab lighting and the num-

ber board and marker lights can be controlled separately in digital operation. There is a powerful speaker in the tender. An imitation coupler in a standard pocket can be mounted on the pilot at the front of the locomotive. There is a close coupling with a guide mechanism between the locomotive and tender. Steam lines on the front group of driving wheels are mounted to swing out and back with the cylinders. The locomotive has separately applied metal grab irons. There are many other separately applied details. Figures of a locomotive engineer and fireman for the engineer's cab are included. Length over the couplers 42.5 cm / 16-3/4". The locomotive comes in a wooden case.

- Locomotive constructed mostly of metal.
- Many separately applied details.
- Digital decoder and a variety of operation and sound functions included.

**This model can be found in an AC version in the Märklin H0 assortment under item number 39912.**

**Notes for operating this locomotive:** The locomotive can be used on curved track with a radius of 360 mm / 14-3/16" or more, however we recommend larger radii. Due to the overhang of the long boiler, signals, catenary masts, bridge railings, tunnel portals, etc. must be installed for sufficient clearance on curves. The track must be well mounted due to the heavy weight of the locomotive. The locomotive can only be run through a turntable or transfer table.



Impressively rich in detailing

*The locomotive comes in a wooden case*







The "Challenger" of the Union Pacific impresses people with its gigantic optic and offers detailing in Trix quality from the pilot to the coal tender

Digital Functions	DCC	mfX
Headlight(s)	•	•
Smoke generator contact	•	•
Steam locomotive op. sounds	•	•
Locomotive whistle	•	•
Direct control	•	•
Sound of squealing brakes off	•	•
Bell	•	•
Warning Sound	•	•
Engineer's cab lighting	•	•
Letting off Steam	•	•
Number Board Lights	•	•
Air Pump	•	•
Water Pump	•	•
Injectors	•	•
Light Function	•	•
Sound of Couplers Engaging	•	•
Rail Joints	•	•
Cab Radio	•	•
Whistle for switching maneuver	•	•
Replenishing fuel	•	•
Replenishing fuel	•	•
Sanding	•	•
Operating sounds	•	•
Operating sounds	•	•
Cab chatter	•	•
Compressor	•	•
Operating sounds	•	•



# Class E 19 12 Museum locomotive



## 22919 Class E 19.1 Electric Locomotive

**Prototype:** Class E 19.1 electric locomotive in a crimson basic paint scheme. Design in the museum version of the DB Museum in Nürnberg. Lettered as E 19 12 of the former German State Railroad (DR), Era II. The locomotive looks as it did in Eras II/VI.

**Model:** The locomotive has an mfx digital decoder and extensive sound functions. It also has controlled high-efficiency propulsion with a flywheel. 2 axles powered. Traction tires. Triple headlights and dual red marker lights change over with the direction of travel, will work in conventional operation, and can be controlled digitally.

The headlights at Locomotive End 2 and 1 can be turned off separately in digital operation. The locomotive has the "Double ‚A‘ Light" function. Maintenance-free warm white and red LEDs are used for the lighting. The engineer's cabs and the engine room have interior details. A locomotive figure is included for installation in the cab. The locomotive body has numerous separately applied details. The locomotive has prototypical double arm pantographs. The locomotive running gear has prototypical modelling of the quill drive wheels. The buffers are constructed of metal separately applied in convex and flat versions. Length over the buffers 19.5 cm / 7-11/16".

- **Highly detailed metal body with a glossy paint scheme.**
- **mfx digital decoder and a variety of operation and sound functions included.**

Digital Functions	DCC	mfx
Headlight(s)	•	•
Pantograph Sounds	•	•
Electric locomotive op. sounds	•	•
Locomotive whistle	•	•
Direct control	•	•
Sound of squealing brakes off	•	•
Headlight(s): Cab2 End	•	•
Whistle for switching maneuver	•	•
Headlight(s): Cab1 End	•	•
Special Function	•	•
Special Function	•	•
Blower Drive	•	•
Blower Drive	•	•
Letting off Air	•	•
Replenishing fuel	•	•
Conductor's Whistle	•	•
Station Announcements	•	•
Doors Closing	•	•
Sanding	•	•
Sound of Couplers Engaging	•	•
Rail Joints	•	•

## Museum locomotive



Prototypical modelling of the quill driving wheels



Lovingly modelled down to the details



**66327 Building Kit of the "Kreuztal (Kn) Gantry-Style Signal Tower"**

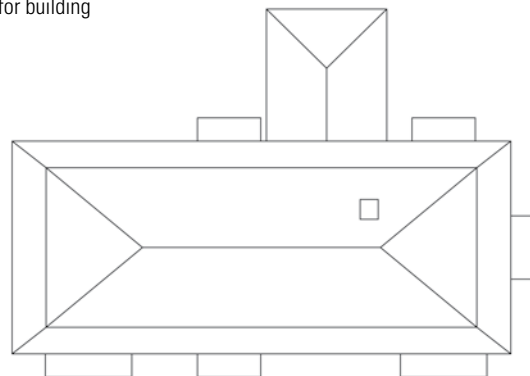
**Prototype:** Kreuztal North gantry-style signal tower, situated on the Ruhr-Sieg route at the Kreuztal passenger station, an electro-mechanical signal tower built in 1931 and currently under historic preservation.

**Model:** This model is made of laser cut, colored architectural-quality card stock. It comes with the finest, laser-engraved details. Extensive instructions for building the model are included.

Signal tower dimensions: approximately 72 mm x 49 mm x 87 mm / 2-13/16" x 1-15/16" x 3-7/16" (L x B x H)  
H = ridge height.

The width for clearance between the base and the stairway is approximately 29 mm / 1-1/8", base width approximately 11 mm / 7/16".

The width of the stairway is approximately 19 mm / 3/4".  
The height for clearance is 44 mm / 1-3/4".



**T66327**

Kreuztal gantry-style signal tower

72 x 49 mm / 2-13/16" x 1-15/16"

A current explanation of the symbols can be found on the Internet at [www.trix.de](http://www.trix.de)



Front page



Back page

# You should have been there!

## Celebrate the LGB anniversary year with us!

At Pentecost in 2018, we will celebrate the anniversary with the Pressnitz Valley Railroad in Jöhstadt. Look forward to exciting attractions and days of total adventure.

The plant in Hungary is also celebrating 25 years of production and manufacture of cars, locomotives, and products for our LGB brand!

Don't forget the Open House Day in Göppingen. In September of 2018, many exciting highlights and a big LGB celebration await you there.

We look forward to your visit!

Further information about the events can be found at:  
[www.lgb.com/50years](http://www.lgb.com/50years)

Open House Day in Göppingen



25 years of production in Győr



© D. Kötze



© T. Schwarze

Anniversary with the Pressnitz Valley Railroad

# TRIX

Gebr. Märklin & Cie. GmbH  
Stuttgarter Straße 55-57  
73033 Göppingen  
Germany

[www.trix.de](http://www.trix.de)

Service:  
Telephone: 650-569-1318  
E-mail: [digital@marklin.com](mailto:digital@marklin.com)

We reserve the right to make changes and delivery is not guaranteed. Pricing, data, and measurements may vary. We are not liable for mistakes and printing errors.

Prices are current as of the print date for this catalog – we reserve the right to change prices between years – prices are in effect until the release of the next price list / next catalog.

Some of the images are hand samples, retouched images, and renderings.

The regular production models may vary in details from the models shown.

**If these edition of the presentation book does not have prices, please ask your authorized dealers for the current price list.**

All rights reserved. Copying in whole or part prohibited.

© Copyright by Gebr. Märklin & Cie. GmbH  
Printed in Germany

319804 – 04 2018



Visit us:  
[www.facebook.com/trix](http://www.facebook.com/trix)



Märklin fulfills the requirements for a quality control management system adhering to the ISO 9001 Standard. This is checked and certified at regular intervals by the test agency TÜV Süd using monitoring tests. You thereby have the assurance that you are purchasing a tested quality product.

Age Information and Warnings



For adults only.

A current explanation of the pictograms can be found on the Internet at [www.trix.de](http://www.trix.de) or in the current Trix main catalog.